

Concerns : Raw Material

Control Sheet N° :

FCM\_2025-0497

Starting date :

12/12/2025

End date :

18/12/2025

**Product Characteristics**

|                            |                                |
|----------------------------|--------------------------------|
| <b>Supplier:</b>           | 1098                           |
| <b>Raw Material:</b>       | Alligator mat L marine GF      |
| <b>Finishing:</b>          | <b>SAFARI</b> <b>ALLIGATOR</b> |
| <b>Material reference:</b> | A-RM-02100                     |
| <b>Material lot :</b>      | B-CM- 0029533                  |

**Summary of results**

|  |                                   |       |       |
|--|-----------------------------------|-------|-------|
| <input checked="" type="checkbox"/> <b>Adhesive Tape</b>                             | <b>Exfoliation</b>                | OK    |       |
| <input checked="" type="checkbox"/> <b>Folding</b>                                   | <b>Change</b>                     | OK    |       |
| <input checked="" type="checkbox"/> <b>Rubbing test on moist state (Veslic)</b>      | <b>50 &amp; 100 cycles</b>        | 4,5/5 | 4,5/5 |
|  | <b>Colour change &amp; aspect</b> | 5/5   | 5/5   |
| <input checked="" type="checkbox"/> <b>Rubbing test on dry state (Veslic)</b>        | <b>50 &amp; 100 cycles</b>        | 5/5   | 5/5   |
|  | <b>Colour change &amp; aspect</b> | 5/5   | 5/5   |
| <input checked="" type="checkbox"/> <b>Colour fastness to perspiration</b>           | <b>Moist &amp; dry staining</b>   | 4,5/5 | 4,5/5 |
| <input checked="" type="checkbox"/> <b>Colour fastness to artificial light</b>       | <b>Colour change</b>              | 3/5   |       |
| <input type="checkbox"/> <b>Rubbing test on dry state (artificial sweat, Veslic)</b> | <b>50 &amp; 100 cycles</b>        |       |       |
|  | <b>Colour change &amp; aspect</b> |       |       |

**Comments**

**Adhesive tape, 3M810**



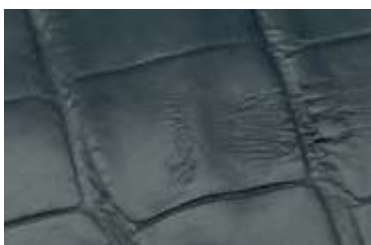
**Observations**

Exfoliation

OK

No visible alteration

**Folding twice**



**Observations**

Change

OK

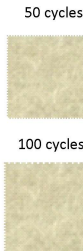
Aesthetic and visual alteration with formation of slight wrinkles.

# TEST REPORT

Control Sheet N° :

FCM\_2025-0497

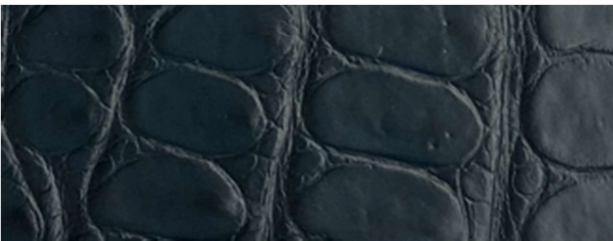
## Rubbing test on moist state (Veslic), partial extension



### Observations

| Felt staining | Final colour change   | Aspect |
|---------------|---|--------|
| 50 Cycles     | 5/5   | 5/5    |
| 4,5/5         | Very slight staining of the colour on the felts. No change of the colour at 150 cycles. |        |
| 100 Cycles    |   |        |
| 4,5/5         |   |        |

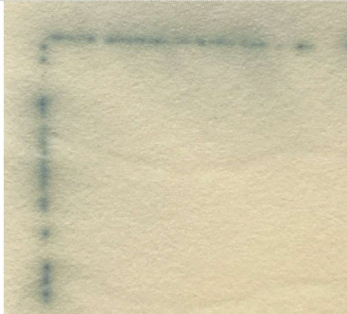
## Rubbing test on dry state (Veslic), partial extension



### Observations

| Felt staining | Final colour change  | Aspect |
|---------------|--|--------|
| 50 Cycles     | 5/5  | 5/5    |
| 5/5           | No staining of the colour on the felts. No change of the colour at 150 cycles. |        |
| 100 Cycles    |  |        |
| 5/5           |  |        |

## Colour fastness to perspiration, 72 hours, ambient temperature, artificial sweat according to ISO 3160-2



### Observations

| Staining on blotting paper |           |
|----------------------------|-----------|
| Moist state                | Dry state |
| 4,5/5                      | 4,5/5     |

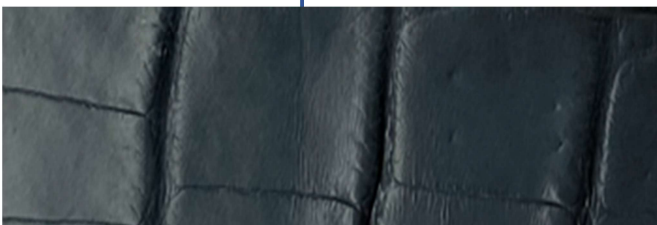
On dry state, very slight staining of the colour on the blotting paper from the surface, intense staining on the blotting paper from cutting edges. Very slight change of the colour on the tested sample, cotation 4,5, with darkening.

## Rubbing test on moist state (Artificial sweat ISO 3160-2, Veslic), partial extension



| Felt staining | Final colour change | Aspect |
|---------------|---------------------|--------|
| 50 Cycles     |                     |        |
| 100 Cycles    |                     |        |

## Colour fastness to artificial light, approx. 7,8 MJ/m<sup>2</sup>, xenon lamp



### Observations

| Colour change                                      |
|--|
| 3/5  |
| Moderate change of the colour on the exposed area. |

# TEST REPORT

Control Sheet N° : FCM\_2025-0497

Starting date : 12/12/2025

**Chromium VI test**

**Observations**

Upper limit  
< 3 ppm

**pH test**

Value

## Standards references

**Adhesive Tape**

**Designation**

**INS-23-239-D-e / SWATCH GROUP**

ISO 2419, Physical and mechanicals trials -Preparation and sample conditioning

OK

No visible alteration

Slight and sparce exfoliation visible on tape, nothing visible on material.

KO

Slight finishing removal, visible on tape and material.

Evident exfoliation and removal of numerous finishing particules on tape and material.

Finishing and underlying material removal.

**Folding**

**Designation**

**Inhouse Method**

ISO 2419, Physical and mechanicals trials -Preparation and sample conditioning

OK

No visible alteration.

OK

Aesthetic and visual alteration with formation of slight wrinkles.

To assess by the customer

Aesthetic and visual alteration of color with formation of slight wrinkles.

KO

Formation of wrinkles and cracks of the finishing.

KO

Formation of wrinkles and finishing peeling off.

KO

Exfoliation of finishing with tearing of underlying material.

**Rubbing tests (moist, dry, artificial sweat, veslic)**

**Colour fastness to perspiration**

**INS-23-229-C-e / SWATCH GROUP**

ISO 2419, Preparation and sample conditioning

**ISO 11640**, Colour fastness to cycles of to-and-fro rubbing

**ISO 105-A02**, Greyscale for assessing change in colour

**ISO 105-A03**, Greyscale for assessing staining

**INS-23-221-E-e / SWATCH GROUP**

**PRO052 / AQC**

NIHS 96-50, Chemical and climatic resistance of a watch case

ISO 2419, Preparation and sample conditioning

**ISO 105-A02**, Greyscale for assessing change in colour

**ISO 105-A03**, Greyscale for assessing staining

**Colour fastness to artificial light**

**Cosmetic Products Resistance**

**INS-23-230-D-e / SWATCH GROUP**

ISO 2419,Preparation and sample conditioning

NIHS 96-50, Chemical and climatic resistance of a watch case

**ISO 105-A02**, Greyscale for assessing change in colour

**Inhouse Method (drop test)**

**NIHS 96-50**, Chemical and climatic resistance of a watch case

**Common used products :**

Waterproof NIVEA SUN SPRAY, factor 20

Hugo Boss perfume, HUGO

Anti Brumm Forte insect repellent, containing N,N-diethyl-m-toluamide (No CAS : 134-62-3)

Carried out by : Beatriz Silva

Modified by :

Date: